



GUIDE-RAIL BRACKET KIT

Guidelines

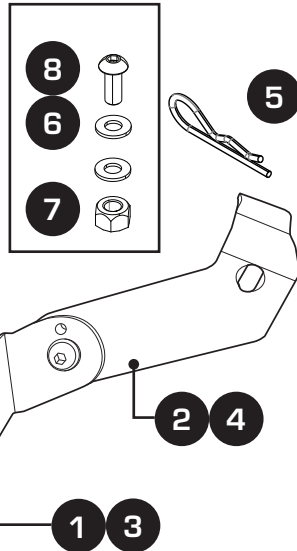
- Ensure hardware is secure before use.
 - Periodically check hardware during use.
 - Only use kit as intended.
 - Check vehicle suitability with LED auxillary lights.
- NOTE: Some vehicles may require resistors. Direct Mount Kit is available for Rockymounts bike carriers.

Parts Included

Features:

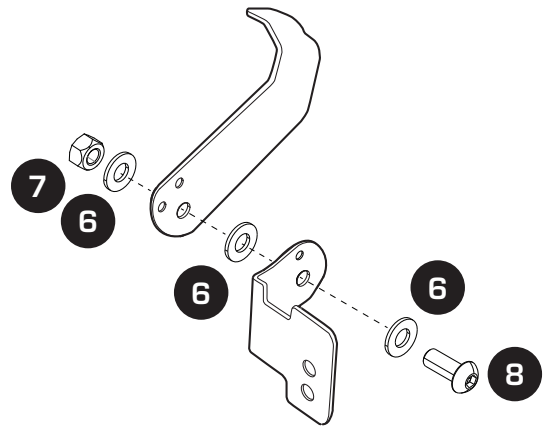
- 1- Plate bracket upper (right).
- 2 - Plate bracket lower (left).
- 3 - Plate bracket upper (right)
- 4 - Plate bracket upper (left)
- 5 - R clip (x1)
- 6 - M8 flat washer (x10)
- 7 - M8 nyloc nut (x4)
- 8 - M8 x 20mm button head screw (x4)

NOTE: For use with auxiliary plates only.



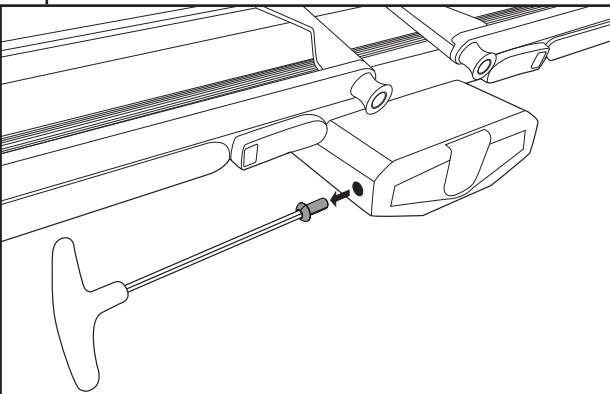
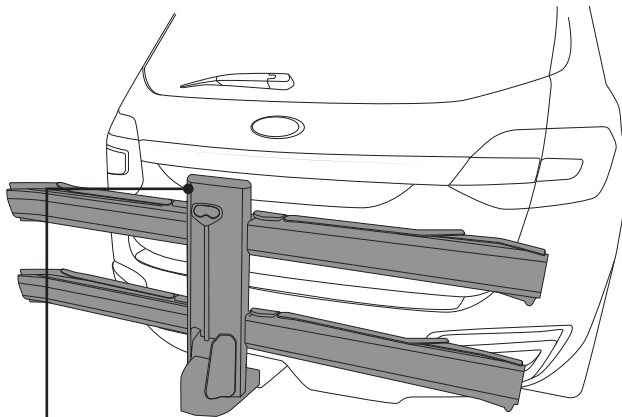
1

Assemble the upper and lower sections of the bracket with the hardware shown.



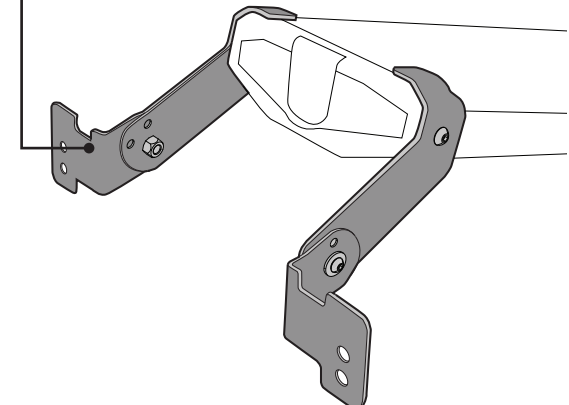
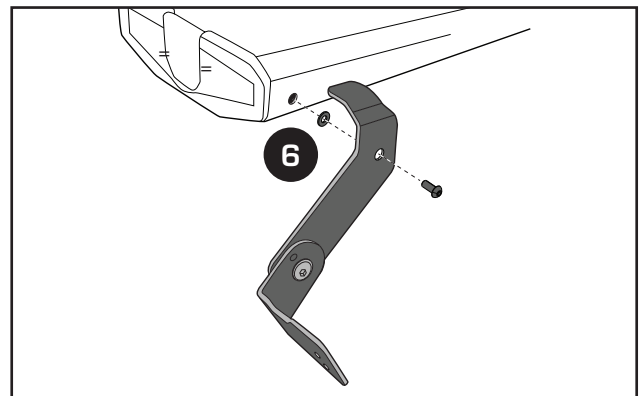
2

Using an allen key, remove the dome head screws at the top of the bike carrier as shown.



3

Place a bracket either side of the carrier, over these newly exposed threads. Fix in place with the M8 hardware removed in step 2. An M8 washer is placed between the bracket and the carrier as shown.

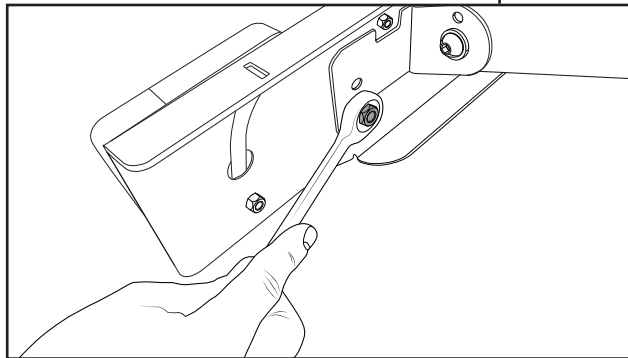
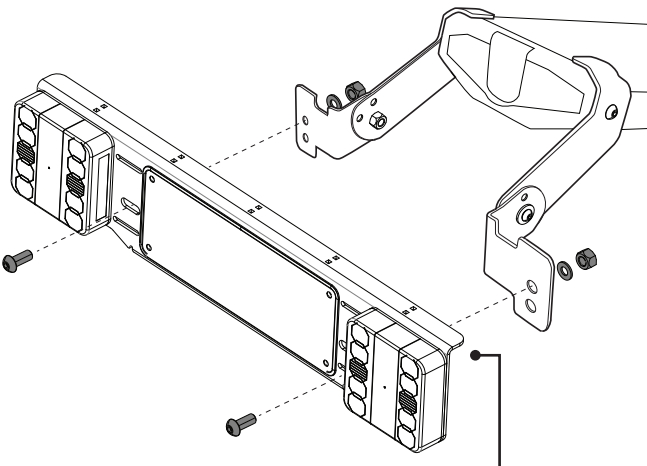




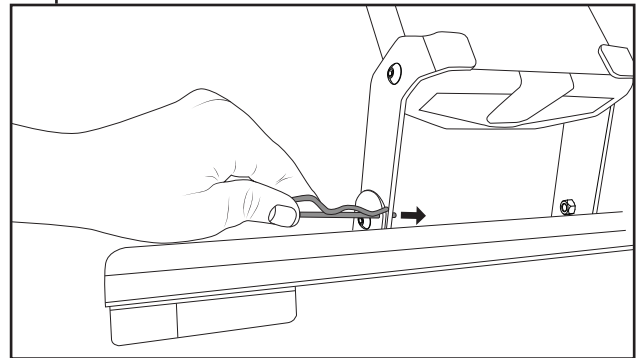
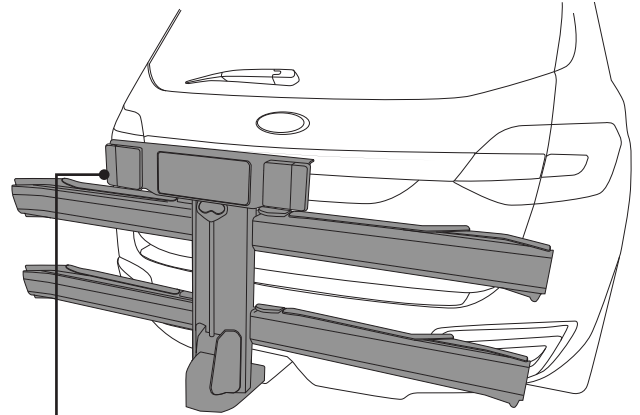
X-COUNTRY

GUIDE-RAIL BRACKET KIT

- 4** Using M8x20mm button head screws with flat washers and nyloc nuts, fit the license plate assembly to the brackets.



- 5** Lock the brackets in place at the desired angle, using the R-clip provided.



Note, If using the bike carrier in a lowered position, always be sure to reposition the license plate holder as shown. Re-fix plate in place with the r-clip.

